

A boiler breakdown infrequently arrives with warning letters. It by and large reveals up on a Tuesday night time, when the heating is cold, the recent water tap runs lukewarm for a couple of seconds, after which nothing occurs. If you will have ever sat in a kitchen with the kettle working considering the fact that you are not able to get warm water for a genuine wash, you be trained at once that "it's only a boiler" just isn't how it feels within the second.

The first rate news is that many boiler breakdowns apply repeatable styles. Some are predictable put on matters, some are renovation gaps, and some are just the influence of stipulations the appliance won't be able to handle, like water chemistry or blocked process filters. If you be mindful the same old failure routes, you will spot disorders previous, shrink name-out charges, and make your subsequent boiler provider unquestionably preventative rather than reactive.

This marketing consultant is written from the perspective of any individual who has been generally known as out for every part from "the boiler gentle is flashing" to "it seems like this is boiling itself to death" and "the radiators are bloodless on the height yet sizzling at the base." Let's ruin down what regularly is going wrong, why, and what which you could do formerly it turns into a full breakdown.

## **The breakdowns that appear to everyone**

Most boilers are out inside the world doing two jobs: making sizzling water and holding a critical heating device in stability. When both process stops, you spot signs. Those signs most of the time point to a slender set of motives.

### **No heating, hot water works**

When the boiler delivers sizzling water however the radiators stay bloodless, the sample more often than not sits in the heating management trail. Common culprits encompass the programmer or thermostat settings, a misguided motorised valve you probably have one, or an drawback with the heating move or equipment move.

A aspect that issues: if the radiators consider chilly however the boiler continues to be firing, which will point out a movement problem. If the boiler will not be firing in any respect whilst the heating is also known as for, you shift cognizance to controls and safe practices interlocks instead of pipes.

I have additionally noticeable cases the place the boiler is producing warm water flawlessly, however the method has trapped air or a blocked filter out at the heating aspect. The end result is a "partial success" that confuses owners, as a result of you recognize the appliance can warmth, yet the apartment will no longer warm.

### **Heating and sizzling water both fail**

When each features prevent, the breakdown is more often than not in whatever thing shared: ignition, fuel provide, electrical give, condensate drainage, protection sensors, or ignition manage.

If your boiler is a state-of-the-art condensing brand, condensate leadership is a big one. A blocked condensate pipe can evade the boiler from operating adequately, despite the fact that the relax of the approach looks excellent. It isn't always constantly glaring considering the boiler may additionally exhibit an errors code, and the home owner may most effective see that it "gained't bounce."

Another popular subject matter is force and water flow. A approach that's too low on drive can lock the boiler out. Likewise, if the equipment has been wasting tension or the drive gauge is sitting low after a right-up, a higher breakdown might not be an "wireless failure," it will probably be the factor in which the boiler ultimately refuses to run.

## **Hot water works, but it takes a while to get it**

This symptom usually aspects to heating-area or circulation subject matters that in a roundabout way have an affect on hot water efficiency, exceedingly in combo procedures. You can also be going through a thermal challenge, like a gradual pump or limescale buildup in the heat exchanger, relying at the layout.

The lifelike takeaway is that gradual warm water might possibly be greater than an annoyance. If that is through limited move, the boiler will work more durable to reach the equal end result, and that further stress can accelerate wear on components like pumps and diverter valves.

## **Short cycling and unusual noises**

Short biking is whilst the boiler starts and prevents greater rapidly than you'd count on. It can manifest whilst the boiler reaches aim temperature too quick, or when controls and sensors give inconsistent [Boiler Breakdown Essex](#) readings. Noises like banging, kettling, or rumbling mainly mean scale formation or circulate regulations.

In older residences, I actually have seen heavy limescale lead to a extremely specific roughly breakdown. The boiler might run, yet functionality gradually degrades over time: longer run instances, larger biking frequency, and radiators that do not consider frivolously hot. Eventually, that turns into boiler fix other than a hassle-free track-up.

## **The areas that oftentimes fail, and why they fail**

Boilers are built to be legitimate, but reliability does no longer imply portions not ever wear out. Many breakdowns come down to materials doing their jobs beneath prerequisites that slowly turn out to be unfriendly.

### **Ignition and flame detection issues**

Modern fuel appliances depend on constant ignition and strong flame sensing. If the ignition electrode is soiled, damp, misaligned, or if there's a gas provide situation, the boiler can also try ignition and fail, or it could lock out.

A flame sensor can also go with the flow over time. It may perhaps "basically paintings" for your time, then one day refuse to run unless wiped clean or replaced. You may well see repeated tries, fantastically if the boiler has a lockout and reset routine.

### **Diverter valves and zone valves**

In structures that separate heating and scorching water, a diverter valve or motorised valve comes to a decision the place the boiler's output goes. If it sticks, leaks internally, or is slow to switch, which you could find yourself with missing warmth, lukewarm hot water, or inconsistent behaviour.

If your method has multiple heating quarter, you'll also get bizarre warning signs when one valve movements and an extra does now not. That is why it is absolutely not satisfactory to "just bleed a radiator" while the

genuine aspect is a valve course.

## **Pumps and procedure circulation**

Pumps are hardworking. They manage sizzling water, rigidity adjustments, and particles carried by means of the process. Over time, deposits can prevent pass and amplify pump workload. If you will have ever noticed that the boiler fires but the radiators slightly warm, a circulation limit is a powerful suspicion.

Sometimes the restoration is straightforward, like doing away with a caught or partly blocked filter out, yet at times it requires deeper work along with a Power Flush to clean the technique. A Power Flush just isn't a informal request, because it needs the appropriate means and best preservation for the boiler and radiators. Still, while a approach is full of sludge, it is going to be the big difference among repeated boiler breakdown calls and stable overall performance after Boiler Service.

## **Heat exchangers and limescale**

Condensing boilers cope with flue gases and produce condensate. When water fine is poor, limescale can building up. Scale reduces heat switch performance, making the boiler paintings more difficult. It also encourages overheating in components in which flow is restrained.

If you spot repeated blunders after resets, or you note a sample wherein sizzling water overall performance worsens over weeks as opposed to days, that is worthy since warm exchanger regulations. That is while boiler restore can turn into "greater urgent than it appears to be like," for the reason that ongoing restrict can strain different parts.

## **Condensate drains and moisture-relevant faults**

Condensate pipes and traps can block or freeze relying on place and weather. The boiler would lock out although the rest appears to be like organic. If your boiler is in a cabinet, in the back of boxing, or in an area with terrible airflow, condensate things develop into much more likely.

Also, examine installing data. A boiler installation that leaves condensate drainage less than stress, or routes the pipe in a means that is not desirable for the property format, can create lengthy-time period complications.

## **Common causes that make breakdowns more likely**

The breakdown itself is broadly speaking the symptom, no longer the foundation trigger. Many root reasons repeat across households and establishments.

## **Water chemistry and sludge**

If your heating process has deficient inhibitor safeguard, or if it truly is crammed most commonly, corrosion merchandise and sludge can acquire. You may not see it until overall performance turns into unreliable, or you get repeated circulation trouble.

This is in which a proactive frame of mind supports. During Boiler Service, a Gas Safety Check ought to disguise dependable operation, but heating equipment wellness could also be about controls, pressures, and water treatment. If your procedure necessities realization, you're going to most likely see clues like noisy radiators, asymmetric heat, or pressure drops over time.

## **Incorrect settings and management confusion**

Thermostats are alleged to make lifestyles less complicated. In reality, misconfigured schedules can set off the boiler into short cycles. A poorly set thermostat, a timer it's struggling with the room keep an eye on, or a misunderstanding about region heating can all train up as "the boiler is broken," while that is honestly being requested to act badly.

The fix is not often to substitute the boiler. It is frequently to determine settings, investigate sensors, and verify controls are studying temperatures safely.

## **Lack of maintenance**

Skipping servicing does now not constantly cause an immediate failure, but it does lessen the margin of safe practices. A boiler that runs advantageous right now is still operating by means of soiled combustion, minor sensor waft, and put on. Over time, the small stuff becomes substantial stuff.

A proper boiler carrier involves inspection and cleansing where properly, checking combustion efficiency, safety techniques, and the final condition of key substances. It also helps you to spot styles early, like a condensate run it is slowly development resistance.

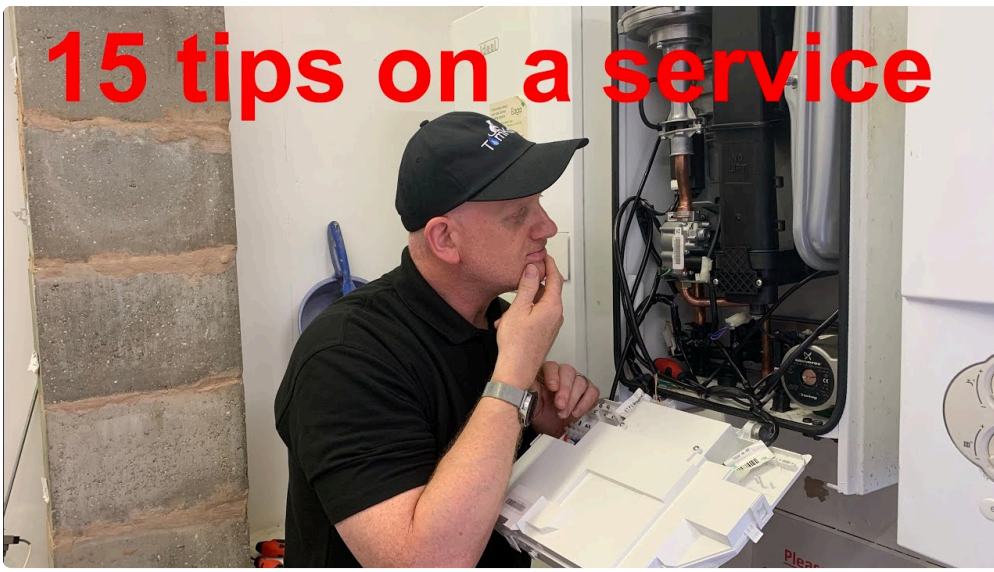
## **Plumbing worries outdoors the boiler**

It is tempting in charge the boiler for every little thing scorching water appropriate. Sometimes the situation is the plumbing upstream, like a faulty shower mixer valve, a blocked pipe run, or a venting challenge in a tank.



I were generally known as to "boiler breakdown" experiences where the boiler was first-rate and the issue used to be a stuck motorised valve or a partially blocked pipework segment. In the ones moments, the distinction between boiler restore and a larger task is understanding what's genuinely being restricted.

# 15 tips on a service



## **Preventive maintenance that if truth be told prevents trouble**

“Preventive repairs” can sound like advertising and marketing till you see what it changes in actual life. The just right outcomes come from a mix of sensible assessments you'll be able to do, plus accurate recognition from a certified engineer.

### **What you could do between services**

You do no longer want to be an professional to observe the signs. Boilers oftentimes furnish small tips ahead of they discontinue.

Pay realization to the power gauge. If it almost always drops lower than the recommended quantity, do no longer prevent topping it up without looking the trigger. Frequent upper-american introduce greater oxygen and get worse corrosion. That ends in sludge and stream problems, which then feeds the subsequent breakdown.

Also pay attention. A mild substitute in sound should be the first clue of trapped air, pass limit, or scale. If you begin listening to a rumble or noticing that radiators take longer to heat, that is a spark off to e-book a provider or check the technique.

Check undemanding things too, like regardless of whether radiators are bleeding correct and whether furnishings or airflow block vents close the boiler. These are ordinary causes, yet they count number.

### **What a superb boiler service should still cover**

A carrier will not be only a stamp. The cost is in what the engineer verifies and the way they interpret what they to find.

For a Gas Safety Check, you need a competent inspection of protected operation. That regularly consists of checking ignition and combustion traits where applicable, interpreting safe practices contraptions, checking out operation, and verifying that the appliance is hooked up thoroughly.

If you run an LPG process, you favor additional cognizance on source balance and accurate configuration for the fuel fashion. LPG behaves another way to average gasoline in phrases of drive and combustion characteristics, and a mismatched setup can intent aggravating worries or accelerate wear.

If you have a bigger commercial setup, like a Burger van gasoline association, the stakes are even larger. A cellphone or roadside ecosystem tends to introduce vibration, conventional motion, and variable exposure to weather. In those cases, documented exams and steady servicing be counted, since reliability is not very non-obligatory.

## **When Power Flush will become the appropriate choice**

A Power Flush is one of those topics that divides other people. Some worry it as disruptive, and others push it as a medication for all the things. The certainty sits in among. A Power Flush is suitable you probably have evidence of sludge or circulation restriction, distinctly while radiators heat erratically or you get ordinary formula faults.

The industry-off is that it really is greater involved than a routine carrier. It necessities appropriate planning, correct chemical substances or flushing mind-set, and safeguards so the boiler is included. It additionally need to be observed by way of right kind water medicine. Done properly, it would ward off a cycle of boiler efficiency falling off and repeated upkeep.

Done poorly, it would get worse things through dislodging particles into areas it needs to not move. That is why you would like the choice to be primarily based on observations, like process behaviour and clear out circumstance, rather than a wager.

## **Boiler installation selections that lower long run failures**

A shocking range of breakdown memories begin with install selections. Not given that the appliance was "unhealthy," but as it changed into put in in a manner that made hobbies upkeep harder or greater working rigidity.

When worker's imagine boiler deploy, they mostly center of attention on the unit. They needs to additionally center of attention on method design, pipework format, condensate routing, and the way uncomplicated it really is to get admission to formula later. Access issues, considering that cleaning and alternative change into real looking rather than a big disruption.

If you might be planning a substitute, it truly is intelligent to speak about formulation health and wellbeing too. For example, whenever you recognise you may have had sludge worries or drive complications, speak using even if you need a Power Flush or healing plan before the hot boiler is put in. Starting a new equipment with a dirty baseline is like becoming a brand new engine right into a motor vehicle with infected oil.

If you are also making plans different gas paintings, like Gas Cooker Installation or Gas Fire Installation, coordinate schedules intently. A smooth gas defense activity could duvet every one equipment competently, with the precise documentation. Many households stack those jobs, and it is simple to lose track of what changed into checked and while.

## **Boiler restoration: what to invite for whilst it goes wrong**

When a boiler breakdown occurs, the appropriate insurance plan you can actually have is obvious communication. Not in a confrontational manner, yet in a sensible one.

Ask what the engineer thinks is failed, what evidence supports that, and whether the issue is possibly to recur. If ingredients are worn, you choose to be aware no matter if the drawback is a one-off alternative or a signal of approach future health trouble that want addressing.

Also ask about safe practices and gas defense certificates documentation the place applicable. If you have got a Gas Safety Check in a landlord context, or you've gotten numerous appliances including fuel fires and gasoline cookers, the bureaucracy matters as it helps you tune compliance and assists in keeping you from repeating work unnecessarily.

A marvelous engineer can even mention no matter if the rest outside most likely contributed to the fault. If it's miles a move component, as an example, they need to flag what they came upon in the components, whether or not there's a hazard of debris, and what could possibly be completed next.

## **Edge circumstances americans miss**

Every boiler has time-honored styles, yet houses have quirks. A few actual-global part instances convey up adequate to mention.

### **Radiators chilly on the excellent, warm at the bottom**

This can imply air trapped, yet it may possibly additionally suggest movement restriction or a hindrance with valve operation. Bleeding the radiator may well aid quick time period, yet if the components maintains returning to that country, you could possibly need to glance deeper at balancing, pumps, or filters.

### **Boiler begins wonderful, then fails after a few minutes**

Heat-associated faults, circulation themes, and sensor waft can purpose this. It could also be at times connected to condensate behaviour below longer runtime. When a fault appears only after the boiler has warmed up, it issues far from natural ignition and against temperature or force legislation.

### **Only one warm faucet is affected**

That leans greater toward plumbing or a localised blockage than the boiler itself. For illustration, a partially blocked shower hose or a failing thermostatic mixer valve can create indicators that appear as if boiler breakdown. It is well worth checking scorching water stores, on the grounds that the sample can retailer time and cost.

## **Where air con and aircon can intersect (convinced, quite)**

You maybe pondering, "why might air con or air con be pointed out in a boiler breakdown consultant?" In a variety of properties, it comes all the way down to heat leadership and device complexity.

Some properties use air resource heat pumps along or as opposed to fuel, and some use separate heating zones and air flow solutions. Also, during wintry weather, worker's often run air conditioning devices in warmness mode after which imagine they have solved heating topics whilst their boiler remains suffering. The result is behind schedule detection.

If your own home has equally a boiler formulation and Air Conditioning package, prevent an eye on usual warm distribution. If the boiler is on a timer however the dwelling under no circumstances reaches thermostat setpoint given that the warm air distribution is inconsistent, it could actually lead to unusual cycling styles. The boiler will not be "broken," it truly is being asked to make amends for circumstances it became in no way supposed to control.

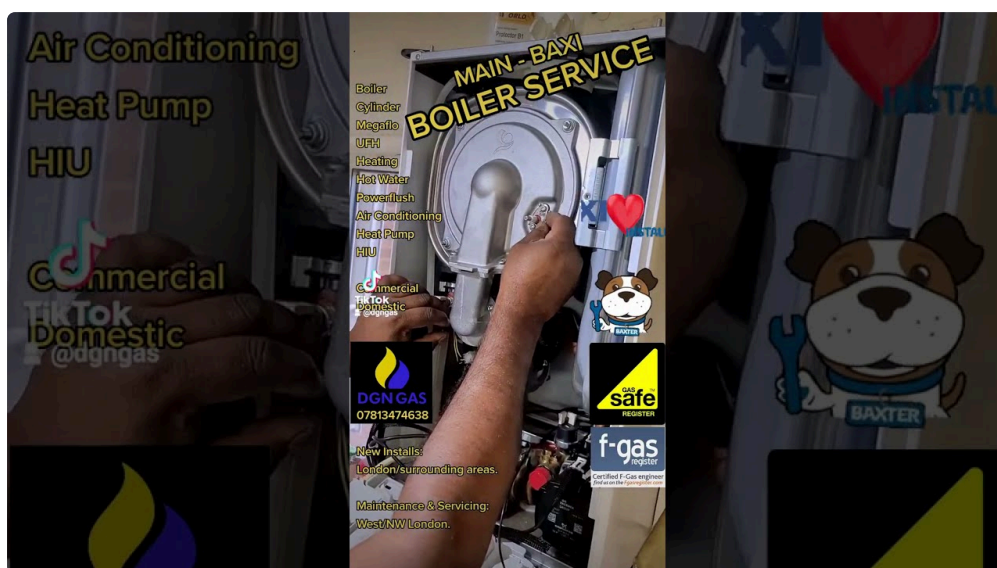
## **A user-friendly "what to do next" approach**

When the boiler breaks down, your intuition possibly to turn the boiler off and anticipate it to "come returned." That will be quality within the short time period, however do now not permit it glide into days if the difficulty is affecting protection.

If it has failed to ignite, otherwise you see lockout codes, stick to the boiler organization's reset training merely as allowed. If it usually fails, you need an engineer, considering repeated ignition attempts can masks the factual result in and waste time.

If the problem is power-related, do no longer normally accurate up with no knowledge the leak or system loss. Find the resource of the force drop. A small leak will likely be hidden at the back of boxing or underneath a surface. That is still a plumbing complication, however it may eventually show itself in boiler indications.

If you favor to steer clear of repeat breakdowns, the top-rated factor which you could do after repairs is to booklet a Boiler Service soon after. Ask the engineer to check formulation well-being, look at various filters, seek indicators of sludge or movement restriction, and speak water therapy. That stick to-using is in many instances what separates a one-off boiler repair from a routine nightmare.



## Quick homeowner list for the primary 30 minutes

- Check no matter if the boiler has displayed an errors code, then be aware the code exactly.
- Look at the tension gauge and determine the extent is inside the original working quantity.
- Verify the thermostat and programmer are calling for heat (and that you will not be accidentally set to "off").
- Check for apparent condensate drainage things, like status water around the condensate outlet.
- If you scent gasoline, do not reset whatever thing, go away the aspect, and speak to the emergency fuel line.

## How routinely need to you service a boiler?

The fair reply is that many houses advantage from an annual carrier, truly for gasoline boilers and LPG setups. The right frequency can rely upon usage, method situation, and appliance fashion. Some landlords and advertisement operations practice stricter schedules by means of safe practices tasks and the want for consistent operation.

If your boiler runs on occasion, like a vacation home, the menace is not just put on. Condensate and idle durations can intent complications too. A periodic provider nonetheless matters, as a result of the boiler's interior kingdom can substitute whereas it seriously isn't closely used.

The ideal manner is to align service timing along with your menace point. If you have got had a historical past of boiler breakdown, ordinary name-outs, or you realize the manner wishes consideration, do now not stretch the space too a long way. It is on the whole less expensive to tackle the early warning symptoms than to watch for a complete fault.

## **Getting smarter approximately gasoline and security paperwork**

Boiler care seriously isn't handiest about overall performance. It is usually approximately dependable operation and documentation. In many settings, one could pay attention words like Gas Safety Check and Gas security certificates. Those usually are not just admin tasks, they're the mechanism by which your landlord duties, or your own safeguard assessments for numerous appliances, reside present day.

If your house comprises added appliances like Gas Fire Installation or Gas Cooker Installation, save a clean report of what was once checked and whilst. People often be aware the boiler service date and overlook that the fuel fireplace or cooker can also have been serviced one after the other, in certain cases on a varied time table.

When the subsequent breakdown happens, having archives can accelerate diagnosis. Engineers can see what portions have been earlier replaced, what faults had been pointed out, and no matter if the appliance has been running with repeated small problems.

## **What preventive upkeep looks like within the factual world**

Preventive protection is simply not glamor. It is not dramatic, it's just steady.

It feels like booking a Boiler Service at the accurate time beforehand chilly climate ramps up. It looks as if monitoring pressure tendencies in preference to only checking the boiler when it fails. It appears like treating the heating device water nicely so your boiler does now not transform the sufferer of sludge.

And if in case you have a trade or an outdoor setting, like a Burger van gasoline setup, it looks as if maintaining a practical, documented schedule and building reliability into your hobbies rather than hoping the next busy day will move easily without a hiccup.

If it is easy to do the ones issues, boiler breakdowns became much less prevalent and much less severe. You still get faults oftentimes, but they're much more likely to be quickly fixes instead of multi-day troubleshooting.

## **The best delusion approximately "breakdowns"**

The fable is that boilers only holiday if you forget about them completely. In fact, even nicely-maintained boilers can fail. Parts wear out, sensors flow, and often times a fault is genuinely horrific good fortune.

What protection modifications is the odds. Good service reduces the possibilities of small troubles changing into device wreck. It additionally facilitates you title problems like stream restriction, water chemistry issues, condensate drainage faults, or set up-linked pressure prior to they achieve the level wherein the boiler locks out and leaves you with a chilly apartment.

If you wish one functional attitude shift, it really is this: treat the first indications as documents. A relatively various noise, a light drop in functionality, a pressure substitute, a habitual scorching water prolong. Those suggestions usually are not "not anything." They are the boiler telling you what more or less issue may be coming next, and what sort of time it's worthwhile to reply properly.

If you've got you have got already had a boiler breakdown recently, or you're planning Boiler Installation or an improve, it really is really worth having a conversation approximately the device edge, now not just the appliance. That is where prevention lives.