

A burger van lives on momentum. Customers arrive hungry, the grill has to continue to be scorching, and the final component you choose is a hiccup with the gas method that stops the whole lot mid-provider. When employees speak about burger van gasoline, they characteristically attention at the flashy bits, the steam, the sizzle, and the rate of the line. What helps to keep that line going for walks is far less glamorous: the method the gasoline is hooked up, maintained, and checked so it performs correctly every day.

Commercial gas for a burger van is a selected mix of realistic plumbing, simple air flow, and disciplined protection checks. Whether you run on LPG cylinders, a bulk tank, or a site source, your setup demands the exact add-ons, correct pipework, dependable electrics wherein primary, and thorough documentation. And once you ever call out a tradesperson since the boiler is performing up, a gasoline hearth won't pale precise, or a gasoline cooker is burning erratically, you favor the formula to be straight forward to diagnose, not a secret of free fittings and unknown ingredients.

Below is how the installations generally tend to look inside the precise global, what exams count number maximum, and in which burger van operators many times get caught out.

## What "advertisement gasoline" means for a burger van

A burger van sits in a challenging classification. It's commercial, but it's cellphone, uncovered, and customarily used in brief destinations. The gas machine has to tolerate vibration from travel, temperature swings from day-to-night time operation, and the every day reality of busy kitchens wherein surfaces get cleaned not easy and matters bump.

Commercial gasoline work in general capacity the set up and servicing should be executed to amazing concepts by way of a certified gas engineer, [Gas Fire Installation Essex](#) with safety exams recorded wisely. You also want to suppose like an assessor: if person had been to investigate your van while it's parked, would your setup be without a doubt dependable and without a doubt documented?



In observe, this affects:

- How pipe runs are secured and guarded opposed to knocks and abrasion
- How regulators and isolation valves are put in and labelled
- How appliances are related, tension examined, and checked for proper operation
- How ventilation is sized so flue and combustion merchandise are dealt with safely

- How you organize preservation schedules and facts of servicing

If you also use home equipment like an air conditioning unit, an extraction formulation, or any electrical add-ons, the gasoline and electric needs work together. For example, negative air flow or an extraction fan organize incorrectly can aggravate combustion trouble. It doesn't count number how magnificent your boiler install turned into if the final environment the equipment breathes is incorrect.

## **The most effortless potential sources and why they trade your approach**

Most burger vans in the UK use LPG, yet a few operations are stressed out up another way based on the place they industry. LPG most likely drives quite a lot of the day-to-day considering, in view that cylinders are moveable and the gas offer desires sensible power law.

If you're on LPG, you'll typically have:

- Cylinders fastened securely outside or in a dedicated compartment designed for fuel storage
- A regulator sized for the appliances and circulate requirements
- Flexible connections handiest where brilliant and with safeguard towards damage
- Isolation valves obtainable and in reality identified

If you're on a mains offer at an tournament website, the focus shifts to safe connection into the van, the best option pipework sizing, and suitable equipment compatibility. The appliances themselves also depend. A gas cooker install that's elementary on LPG is perhaps very assorted from a gadget designed for a selected furnish drive, primarily when you've got assorted appliances walking promptly.

The best operational distinction you'll understand is how your van behaves below load. When the grill, hotplate, and perhaps a gasoline fryer or salamander are all strolling together, the demand for gasoline rises. A regulator this is a little bit undersized, a pipe run that's too restrictive, or a leak that's small adequate to overlook once you do a brief verify can express up as poor flame balance or behind schedule ignition. Those signs can appear as if "an appliance issue," but the root reason possibly provide or setting up first-class.

## **Planning the structure earlier every person touches a spanner**

Before set up, the structure judgements do maximum of the paintings. I've obvious burger vans the place the first issue wasn't a erroneous element in any respect, it was the routing. Pipes were squeezed at the back of panels, connections had been hidden, and nobody may just get right of entry to the close-off valve easily. Later, while some thing went unsuitable, the engineer spent so much of the go to dismantling cabinetry and tracing what became buried at the back of it.

A excellent structure makes security and carrier less demanding. It's now not as regards to compliance, it's approximately time and reliability inside the kitchen.

A life like deploy plan considers:

- Appliance placement relative to air flow and any flue requirements
- Where isolation valves and regulators could be, so that they're reachable with out taking 0.5 the van apart
- Pipe maintenance wherein it passes because of metalwork edges or close to relocating parts
- Heat sources and splash zones, incredibly round grills and fryers

- Whether you need to coordinate with extraction and air dealing with, so combustion and ventilation dwell consistent

If you come with an LPG garage compartment, the compartment design subjects simply as tons because the gas areas. The storage sector will have to defend cylinders from affects whereas ensuring the compartment can vent correctly. I'm careful about this given that condensation, cooking vapours, and spillages come about. If the fuel garage is inside the similar area as oil mist or steam, corrosion and seal degradation can became a sluggish-burn problem you only find out when it's already affecting overall performance.

## **Installation fundamentals: home equipment, pipework, and protection**

A burger van gasoline manner is only as extraordinary as its weakest connection. In a regular setup, the gasoline engineer will connect every one appliance with proper pipework and the best option connectors. They'll payment that home equipment fit the intended gasoline classification and delivery drive. Then they'll test for leaks, make certain trustworthy operation, and confirm combustion is top.

Pipework deserve to be run and glued so it doesn't rub, flex excessively, or take tension at the connections. Where there's any likelihood of erosion from panels or door circulate, you wish protective measures.

Practical small print I search for once I'm assessing installs for present trucks:

- Are all valves handy, or are they trapped behind hinged panels?
- Do versatile hoses have maintenance from warm and call, and are they in first rate situation?
- Is there a transparent path for pipework that avoids sharp edges?
- Are connectors geared up in fact with the accurate seals, and are they now not visibly strained?
- Are appliances set up level and good, so their gasoline connections and burners aren't preventing alignment considerations?

With burger vans, vibration is a silent contributor. A good-equipped deploy may still nevertheless be tight after a season of go back and forth. If you realize any routine smell or burner themes after shifting, it's on the whole a sign that anything isn't secured exact or isn't designed for the stresses of mobility.

## **Gas protection checks that count number in every day operation**

A gas safe practices payment will never be only a office work practice. It's what catches early faults earlier than they turn out to be a callout inside the center of a busy Saturday night.

When engineers perform tests, they in general check the safe practices of connections and the dependable operation of each appliance. Depending to your setup, it will contain leak testing and assessments that burners and ignition are operating as meant. If you could have any flue-producing appliances or gas fires, the inspect may also comprise ensuring combustion and ventilation are excellent.

In a burger van, there's also a certainty that things amendment. A new cooker would possibly get equipped, a regulator could get swapped, a panel will be reworked all through refurb. Each difference can adjust how the entire gadget behaves. That's why it's intelligent to deal with gas protection certificates updates and stick with-up tests as component of your running regimen, no longer something you do handiest once a yr.

Here's a realistic snapshot of what a genuine "make it trustworthy" discuss with in the main focuses on:

- Confirming fantastic gasoline type and appliance settings
- Testing for leaks on the machine and connections

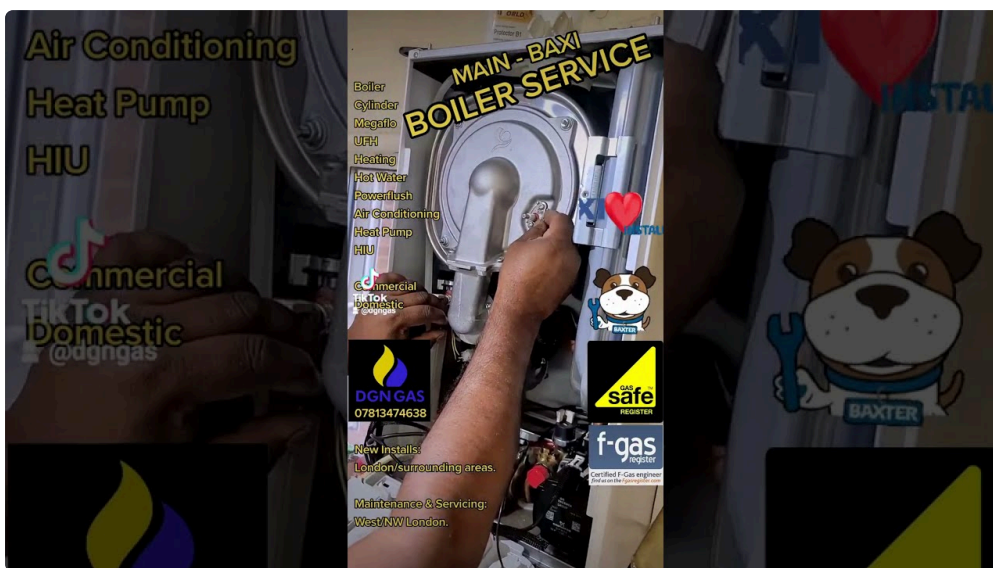
- Checking burner performance and ignition stability
- Verifying ventilation adequacy for combustion and nontoxic operation
- Recording effects genuinely, so you realize what changed into checked and what changed into found

That final aspect sounds administrative, but it subjects. If your data are missing or obscure, troubleshooting later turns into slower and extra pricey. You don't wish a long term "Boiler Repair" or "Gas Fire Service" changing into guesswork about what was once performed closing time.

## Gas cooker setting up and efficiency points you'll in truth notice

Gas cookers in burger trucks are usually used onerous, they usually're exposed to oil vapour. If the cooker is mounted smartly, it need to continue to be steady. If it's now not, you'll see patterns: flames that elevate off the burner, choppy warmth, not on time ignition, or burners that go out while you regulate controls.

Some themes are equipment-appropriate. Others are installation linked.



For illustration, a burner that burns yellow can factor to air or combustion troubles, however it would also be associated to air flow and drive balance. If the source power drops lower than simultaneous call for, chances are you'll see that "it's pleasant till we jump grilling accurately." That symptom is traditional for source or regulator capability complications. In that case, the gas cooker might not be "broken," but it's being requested to function outside its safe, solid working window.

A careful fuel cooker installation may still consist of tests on:

- Flame quality across all settings
- Safe ignition series, incredibly on high-load service
- Control response, so replacing settings doesn't lead to instability
- Adequate ventilation, which for burger trucks should be compromised via how the van is put at an event

Also, in case you ever alternate the design, pass the cooker, or switch it for a completely different type, deal with it as a new setting up in place of an "straight forward swap." Different appliances could have different burner preparations and standards.

## When boilers and heating come into the mix

Not every burger van makes use of a boiler, however many do. Some operators set up a compact boiler to present hot water for washing, sanitising, and now and again heating. Others use a fuel fireplace or devoted gasoline heater for maintaining personnel hot in iciness commerce.

Once a boiler is element of the manner, all the things turns into extra delicate to upkeep.

You would pay attention men and women discuss approximately Boiler Breakdown and count on it's consistently the equal aspect: a failure that prevents warm water chilly. But many of complications jump previous as minor indicators. Pressure dropping, intermittent ignition, or abnormal noises can present up after a length of heavy use. If you ignore those signs, you chance a extra luxurious Boiler Repair later, and you possibly can additionally create protection worries if combustion or air flow is affected.

A boiler provider is oftentimes the highest location to seize the ones signs and symptoms. A proper provider exams the boiler's operation, its defense controls, and key performance explanations. Where related, a few procedures can also require activities like a Power Flush, principally if there's sludge or habitual flow points. The key exchange-off is price and downtime. A Power Flush might possibly be disruptive and will require planning round whilst you might close for provider, so it's now not whatever thing to do blindly. But when it's justified, it most of the time restores official heating and reduces repeated faults.

If you're also going for walks Gas Fire Service for any heating unit, it's worthy coordinating these visits. A fuel hearth isn't just a "warm temperature" equipment, it affects combustion conditions. If ventilation is marginal, an difficulty with one equipment could make another behave badly. I've viewed instances wherein the boiler "seemed to be the hardship" until the engineer located that the fuel hearth installing and ventilation association were contributing to combustion imbalance.

## **Aircon, extraction, and the way air flow becomes a shared problem**

Burger vans increasingly more add Aircon and Air Conditioning. When you upload mechanical ventilation and climate management, you alter air stream styles in the van. That can engage with fuel combustion air and flue draw.

Extraction platforms are every other colossal factor. A potent extractor over the cooking line is an efficient aspect for safe practices and luxury, however if it creates detrimental strain or pulls air from the inaccurate places, it could actually have an effect on how gas appliances breathe.

This is wherein judgment is available in. An engineer may perhaps set up gas perfectly, however if the extractor fan speed, ducting, or inlet locations are fallacious, the fuel equipment can turn out to be unstable. In observe, you would like a coordinated plan. If an air con unit or extraction upgrade passed off after the normal fuel installing, take into consideration a refreshing Gas Safety Check and useful operation try out whereas each methods run as they by and large might during alternate.

It's straight forward for other people to separate disciplines into "fuel individuals" and "plumbing laborers," yet in a burger van, the kitchen surroundings ties it all in combination. Plumbing themes, pipe runs, and the layout of accessories can have an effect on how air flow paths paintings and the place condensation bureaucracy. Condensation close to fuel parts is not at all a specific thing to disregard.

## **Leaks, odours, and what "small" somewhat means**

The words "small leak" are detrimental in ordinary dialog. Gas leaks don't behave like a minor nuisance. They may well be intermittent. They may well express up handiest after the technique heats up, or solely after cylinders transfer, or only when an equipment is working beneath load.

If you scent gasoline:

- Shut off the gas furnish properly.
- Ventilate the van.
- Do not flip electrical switches on or off in a way that creates sparks.
- Call a qualified engineer to uncover and fix the leak.

I'm not being dramatic here. LPG and different fuel programs are a thing you deal with critically. Even in the event you consider which you could handle it, you wouldn't reliably look at various by means of smell. A leak that's slightly detectable may still be noticeable, noticeably in an enclosed space.

Also, certainly not suppose that as a result of the odour is going away, it's constant. Some leaks are drive-comparable. If a connection is marginal, you would now not detect it at leisure but you'll note it once appliances run and fuel float modifications.

## **Gas protection certificate and documentation: what to hold on hand**

A Gas safe practices certificates subjects since it proves the paintings become carried out, the formula changed into checked, and outcomes have been recorded. It's additionally what is helping you as an operator, as it gives you continuity.

If you flow areas most often, attend events many times, or have specific workforce running the van, documentation turns into a guidance instrument. Your workforce shouldn't need to guess how you can isolate the fuel in an emergency, they usually shouldn't need to guess whilst the final tests took place.

I counsel retaining:

- The such a lot current fuel safeguard certificate
- Service reports for each and every gas appliance
- Notes on any maintenance, regulator swaps, hose replacements, or appliance changes
- A standard map or label exhibiting isolation valves and key controls

You can store it basic, a folder inside the place of work or a devoted folder on a telephone, as long as it's attainable. When an engineer asks "what turned into changed ultimate time," you shouldn't be looking through messages on a hectic day.

## **Common installing mistakes I've visible on burger vans**

Every enterprise has a few repeat offenders, and burger trucks have their very own styles. They by and large come from looking to fit too much into too little space, speeding a switch, or hiding ingredients for aesthetics.

The error generally tend to fall into just a few themes: inaccessible valves, poor safe practices of pipework, air flow mismatches, and substances that had been not designed for telephone commercial use.

Here are some of the maximum overall topics I see, and what they purpose:

- Gas hoses or connectors positioned in which warmness and grease exposure can degrade them prior to expected
- Isolation valves hidden in the back of panels, which will increase chance throughout the time of faults seeing that time matters

- Ventilation preparations that work “most of the time” however fail at windier parties or whilst the van orientation changes
- Incorrect settings on home equipment after a alternative, greatest to negative burner performance
- Pipework runs no longer thoroughly secured, enabling movement that in the end affects seal integrity

When a trouble is intermittent, it's continuously no longer the appliance itself. It's the ecosystem around it, or the manner the process behaves while all the things is working rapidly.

## **How most of the time should still you get serviced?**

If you're running as a commercial trade, you shouldn't treat servicing like an not obligatory excess. Gas Safety Check schedules are sometimes set by using the regulatory expectancies and the type of premises and machine you've got you have got. In a burger van, the working conditions can also be harsher than a static save since travel, vibration, and customary repositioning turn up.

The safest approach is to observe the instruction that applies to your occasions and prevent the schedule regular. If you become aware of a change in overall performance, treat it as a cause for inspection, even in the event that your final test was contemporary. A Boiler Breakdown or ignition fault is usually a symptom. The longer you wait, the more likely the fault expands into anything greater costly.

Also, in case you've lately had any Plumbing work close gas pipework, or you modified the format for tools like a brand new hotplate or an air conditioning unit, e book a inspect. Small variations may have bigger consequences than men and women are expecting.

## **Troubleshooting: what to ask should you name for Boiler Repair or Gas Fire Service**

When matters go wrong, you want an engineer who can diagnose efficiently. You can aid that procedure by being designated approximately what you've mentioned.

Instead of “it isn't operating,” say when the fault takes place, whether it takes place on start-up, and how it behaves if you happen to run different home equipment. If the issue is ignition, be aware whether or not the ignition is slow, no matter if there's a put off sooner than flame, or whether the flame goes out in case you unencumber the control.

If you name for Boiler Repair, mention any fresh transformations in the van. For illustration, did you could have a brand new extraction configuration, did you circulate to a extraordinary variety of pitch with specific wind exposure, or did a cylinder regulator be replaced? Those tips can shorten the troubleshooting cycle.

For Gas Fire Installation or Gas Fire Service, air flow and flue habit count number. If a gasoline fireplace behaves in another way at specified parties, it's well worth telling the engineer. It can point to airflow styles as opposed to an interior part failure.

## **Edge circumstances: distinct home equipment, cylinder adjustments, and top nights**

Peak nights are when weaknesses educate themselves. Many burger vans run distinct fuel home equipment simultaneously, and that may reveal tension drops, regulator skill disorders, or pipe sizing complications.

Cylinder switching is yet one more facet case. If you utilize two cylinder setups, the manner ought to transition smoothly. A bad regulator setup or poorly connected changeover can create unstable deliver, inflicting home equipment to run unevenly or ignite poorly. This is the more or less subject that shall be terrifying since it tends to show up if you're busy and everyone's relying on the kitchen functioning.

The solution is just not "continue pushing thru it." The solution is to verify the set up is designed for the unquestionably gas load and tested for stable operation. A correct Gas defense certificate inspection and appliance try must bear in mind the operational reality of your van, not just bench stipulations.

## **Bringing it all together: security you are able to really feel for the period of service**

When industrial gasoline for a burger vans is set up and checked appropriate, the outcome is refined but tough. The burners gentle on the primary try out. The flame looks properly and stays constant. The approach doesn't smell. The employees know the place isolation valves are with out searching. When you name for Boiler Service, Boiler Repair, Gas Fire Service, or Gas Cooker Installation keep on with-ups, the engineer can right away hint the method and make certain it fits past records.

That's the actual payoff. Not simply compliance, however self belief. In a industry constructed on timing, trust prevents misplaced buying and selling hours and avoids the "we'll deal with it later" approach that turns small faults into emergencies.

If you're planning an LPG improve, adding a new gasoline cooker, or moving your van to events with distinct ventilation situations, treat the fuel device as component of your operational setup, now not an afterthought. Plan the design, choose elements that fit a cellular commercial ambiance, and hinder tests recent. The most useful burger van fuel programs don't demand consideration. They quietly do their task, every day, although you concentrate on cooking.