

If you run a number of workouts characteristically enough, you start to detect styles. Some props remaining for a long time. Others quietly degrade, and you merely recognise while the functionality is already in motion. A gimmick that still “variety of works” is the maximum unsafe style, as it tempts you to carry on except the instant it doesn’t.

That is why refills and replacements rely. In a real magic trick retailer, the correct purchases are rarely the flashiest ones. They are the uninteresting necessities that save your work steady: the consumables, the substitute parts, the refills that restoration reliability, and the small accessories that make a trick suppose sparkling returned other than worn out and temperamental.

This ebook is written with the approach performers certainly take care of props in intellect, with lifelike options you'll make whether you purchase from a magic store, a magic keep united kingdom, or a specialist magic trick shop.

Why refills believe “unsexy” but keep your show

Most workers ponder refills as backups for emergencies. In train, they're greater like scheduled repairs. The distinction shows up in the present day when you switch from “hope it holds up” to “it really is the variation that I realize behaves as of late.”

A card habitual may very well be first-class except the day the playing cards begin to misbehave. A coin outcome may very well be in charge till the tape loses grip. A vanish will possibly not be a vanish if the provided substitute subject material has alternative thickness or friction. With magic, small variations create outsized consequences.

I actually have had a functionality wherein every part went easily for ten minutes, then a gimmick slowed down simply satisfactory to pressure me right into a exclusive coping with. It worked, however the rhythm become long past, and you're able to feel it. After that, I began treating refills like section of my equipment, not a last-minute spare.

What “refills and replacements” as a matter of fact covers

When workers ask approximately “refills”, they normally imply consumables. Think alongside the traces of replacement items that get used up: gimmick inserts, adhesives, level fluids, thread or elastic ingredients, substitute gimmick areas that put on with use, and replenishable parts.

“Replacements” can comprise non-consumable objects that still want swapping: extraordinary size props, alternative materials for mechanisms, substitute shells or covers, and consumables that would be changed one by one from the major equipment.

In a magic trick shop, you basically see the identical trick bought in assorted “formats”, and the difference will not be constantly approximately components. It should be about what that store expects you to deal with. A refilled gimmick is most likely engineered to tournament a selected base prop so that you get constant weight, flex, and friction.

When you buy replacements, you might be shopping consistency. That is the truly product.

The classes of refills that depend most

Different performers gravitate closer to different styles, however the replenish anguish elements tend to cluster. Here are the areas the place substitute selections mostly choose even if a trick feels riskless or just "would possibly work".

Consumables for rope, thread, and elastic effects

If your act includes rope, thread, or elastic—primarily based visuals, the substitute subject material can have an affect on tension and movement. Elastic that may be a bit of thinner can snap returned harder or movement slower. Thread it is too slick may well slide rather than trap. Rope that alterations absorbency or stiffness can modify how it behaves below warmth, friction, or knots.

A sensible attitude is to deal with the alternative textile like "the comparable tool, new condition". If you are able to healthy the unique spec, do it. If you can't, you're able to desire to adjust dealing with, and that will never be one thing you want to uncover on degree.

Adhesives, tapes, and gummed components

Adhesives can be difficult, due to the fact that the same "category" of adhesive can practice in another way depending on surface and age. Even when you buy a alternative, it helps to be aware of what it is intended to do.

Are you sealing a thing for a quick moment, or protecting weight longer? Is the adhesive supposed to unlock cleanly? Does it need to live to tell the tale a hot surroundings, like a busy level?

If you operate anything else sticky on or inside props, substitute seriously isn't essentially "having more". It is about predictable stickiness. Worn adhesive, dry glue, or tape that has misplaced tack modifications timing and sound.

My rule is unassuming: if a gimmick uses adhesive as a sensible portion, I do no longer wait for failure. I change sooner than my self assurance drops.

Refillable degree fluids and wax-like materials

Some outcomes rely upon fluids or coatings that put on briskly with repeated handling. If your technique depends on slickness or thickness, the substitute product's viscosity matters. If you do primary stagework, you can actually additionally be aware that functionality prerequisites alter how those substances behave.

If a fluid is supposed to be refilled, it can be formulated to stay steady with the normal amount and box. Mixing brands or substituting "an identical" items can paintings, but it aas a rule creates delicate adjustments: residue, slower circulate, or messier cleanup.

It is enhanced to adhere to the stock up designed for that result, in spite of the fact that it quotes a touch greater, as a result of the advantage is rehearsal time saved and less surprises.

Replacement areas for mechanisms and shells

Not all mess ups are consumable. Sometimes the prop itself is the trouble, and the "alternative" is the worn area that keeps friction and alignment greatest.

A user-friendly example is the place a mechanism depends on smooth circulation, smooth spring rigidity, or the in good shape among two shells. When the ones materials wear, the impression can turn into louder, slower, or harder to reset.

If the shop promises substitute formula, it's also for the reason that they may be supposed to restoration the common tolerance. That things. A substitute that feels a little bit off is usually a warning signal that the prop will no longer reset the way you remember.



Card and gimmick maintenance

Cards, coin units, and trendy gimmicked decks are a category on their very own, seeing that "replacements" embrace either constituents and repairs products.

If you operate gimmicked cards, replacements are about greater than having spare decks. It is set conserving finish, reduce, and sense steady. If the deck differs in a visual way, your dealing with would possibly amendment. If it differs in the way it bends or slides, your timing adjustments.

Even while you purchase replacements, sparkling coping with matters. Residue from dermis oils, level lights warmth, and airborne dirt and dust can all create slip and stickiness. So refills and replacements pair with trouble-free repairs, like cautious garage and mild cleaning that matches the material.

How to desire the good refills with no guessing

A lot of worker's attempt to remedy fill up selections through asking, "Is this the equal trick?" The more fantastic question is, "Is it the same spec?"

When you would like refills from a magic store uk or any provider, cost for compatibility markers. The strongest signals are in general these:

- The exact mannequin or version name of the prop
- The length, diameter, size, or ability acknowledged for the replacement
- Packaging labels that suggest "to be used with"
- Whether the refill is designed as a whole inside insert, not a common substitute

If you will not in finding matching commands, ask. A factual magic save will primarily tell you whether or not a replenish is like minded, and why. If they can't, that may be a sign to be wary, in view that the alterations that count are most of the time invisible till you examine.

I treat unknown compatibility like a rehearsal complication. If I won't be able to rehearse with it no less than some times previously a paid gig, I both favor a wide-spread fill up or I opt a one of a kind result. That is how

you shelter your rhythm.

The “finest” refills are usually uninteresting, but they are gold

When performers talk approximately “the most reliable refills and replacements”, they ordinarily imply three issues.

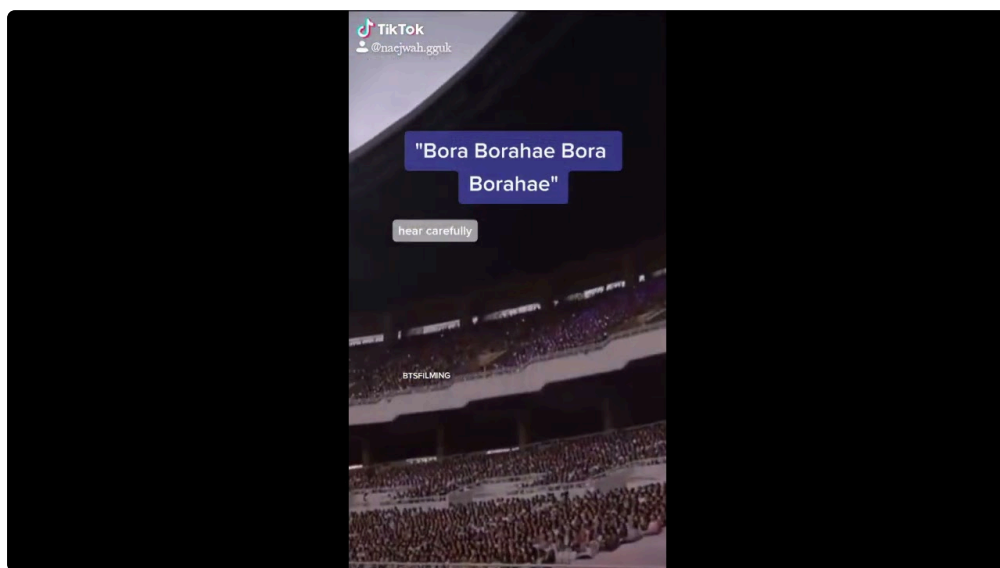
First, they repair the authentic behaviour. Second, they cut down the volume of time you spend troubleshooting throughout the time of setup. Third, they provide you with adequate spare cycles to prevent excited about the prop for the period of your functionality.

That is why, in a magic trick keep environment, the most well known agents are usually the unglamorous objects: substitute shells, fill up inserts, substitute adhesive sets, and consumables that deliver your props returned to factory suppose.

Here are the realistic factors those refills are value prioritising.

Reliability beats variety

Buying distinct “comparable” refills can think like smart insurance policy, however it mainly creates some other aspect: your dealing with may also now not event your props.



If your outcomes relies on friction or anxiety, you want solid behaviour. A single popular stock up that you just restock gradually as a rule beats experimentation.

Consistency enables your muscle memory

Magic is choreography. Even in case you do the similar movements, your physique adapts to how a prop actions below your hands. Changing mass, slickness, or elasticity can drive micro-transformations.

A refill that makes the prop behave the approach you knowledgeable on is the single that lets you cease thinking.

Rehearsal time is expensive

Every alternative needs at least a short try. If you get the precise refill, that scan is rapid. If you get the wrong spec, that attempt grows into per week of adjustments.

If you ever needed to rework a series since a top off behaved another way, you realize how worrying that should be would be could very well be.

Storage and coping with: any other 1/2 of "stock up readiness"

Even the finest refill can disappoint if the environment is inaccurate. Refills aren't sterile lab gifts. They are living on your palms, your bag, your package field, and your degree drawer.

A few conduct make a great distinction:

Keep refills of their sealed packaging until you want them. Moisture, dust, and epidermis contact can swap functionality for adhesives and components. If you use the rest fluid or tacky, store it far from top warm, in view that thickness and tack can flow.

For props that reset with small mechanisms, keep "overstuffing" your equipment. When alternative materials sit jostling with different gadgets, that you can create scratches or micro bends that change in good shape later.

And remember the label. If you have a couple of variants, write a date and save tune of which batch you opened first. It is the only means to spot no matter if a replacement is degrading sooner than expected.

A immediate compatibility take a look at you could do earlier than you order

Before you spend, it supports to verify compatibility. You do now not want evolved engineering, a number of direct assessments.



- Confirm the prop's suitable call or kind (now not simply the trick's fashionable identify)
- Match the fill up fashion to the fashioned perform, like insert vs container vs adhesive unit
- Check recounted dimensions (size, thickness, potential) and whether or not it's intended for a particular length prop
- Look for "to be used with" markings or compatibility notes from the supplier
- If it's uncertain, ask the magic shop united kingdom or the enterprise immediately with a graphic of the prop and the packaging

If you do these five matters, you cut down the menace of purchasing a top off it's "shut adequate" yet no longer shut enough for degree paintings.

When refills fail anyway, and what to do

Even with best possible compatibility, issues can manifest. Packaging can shift. Materials can settle. Adhesives can dry. Elastic can lose pressure if saved badly.

What things is having a plan for failure that does not smash the exhibit.

Sometimes the most beneficial substitute is not very an alternative stock up, this is a exceptional segment of the hobbies. You can rearrange a series so the unsafe component is moved later or substituted with a safer impact for the time of that set.

Other occasions, you could do a quick in-the-moment payment. For illustration, with any gimmick that is based on friction or stickiness, you'll gently take a look at the action in the past you ever deliver it on. If it behaves incorrect, you swap to a backup unit.

This is why I like conserving not less than one "identical-trick but diverse handling" spare. It does not ought to be absolute best. It has to be responsible.

A be aware on safeguard and mess

Some refills involve parts that desire careful handling. Even if a product is designed for magic, your place of work rules nonetheless follow, and venue insurance policies differ.

If you operate drinks, adhesives, powders, or the rest that might depart residue, prevent a cleanup plan. Bring wipes that healthy the floor and do now not create smears. For level fluids, payment regardless of whether your replacement is envisioned to be wiped clean with water, alcohol, or yet one more approach, considering that utilising the wrong you'll ruin props or stain materials.

If a replenish accommodates whatever thing which may irritate pores and skin, gloves should not overkill. If a stock up is saved in a approach which may leak, you will not be basically wasting overall performance fine, you are risking a mess mid-match.

A true magic retailer will customarily endorse on dealing with. Follow those guidelines, even you probably have used equivalent resources for years. The change between "works" and "safe and constant" will likely be small.

Prioritising restocks for a operating performer

Not every trick wants a sparkling replenish each time you perform. The most productive restock strategy is based on your utilization, now not your enthusiasm.

For example, if you do an popular shut-up set, you can burn by means of consumables speedier than a weekend hobbyist. If you do kinfolk-pleasant tuition assemblies, your props also can take more tension, greater temperature adaptation, and extra well-known resetting in quick windows.

Here is a standard method to decide what to restock first, with no turning your kit right into a warehouse.

- Restock what your ordinary relies on such a lot seriously, the portion that modifications the impression's straightforward function

- Keep spares for any adhesive or consumable that impacts timing or release
- Prioritise replacements for mechanisms that wear because of the resets, no longer simply the elements that seem used
- Replace gimmicks that display noticeable put on, like texture differences, cracks, stretching, or warped seams
- Build a “one again-up” rule for gig-significant props, so a failure turns into a speedy switch, no longer a panic

That strategy works throughout styles. It additionally maintains you from spending money on refills that in no way get used prior to they expire or emerge as one more storage object.

How to test refills so you confidence them on stage

A top off does no longer ought to be tested for days to be secure. It just needs sufficient rehearsal time to be certain the behaviour you care approximately.

Start small. Test the precise step the place the fill up issues. If the top off influences launch, look at various the discharge. If it affects pressure, try pressure, then try out reset.

I in most cases allocate a brief “trust session” at abode. It isn't a full run-as a result of. It is certain follow.

If your fill up differences how the prop feels in hand, you can need to adjust finger power, pacing, or attitude. Do no longer suppose it's going to “settle in”. Some substances do settle, yet others settle the incorrect manner and make overall performance worse over time.

Also, save the fill up after the try in a manner that protects it. A test run with dangerous storage after can undo your trust, in view that adhesives dry and material deform.

What to seek for in a magic keep united kingdom while shopping for refills

If you might be paying for from a magic retailer united kingdom or any on line supplier, you desire some things that make refills more straightforward to control.

Clear product naming facilitates. If the itemizing says what prop variant it matches and what the refill consists of, that you can order with a bit of luck. If the checklist is indistinct, you can still nonetheless ask, however you take on greater risk.

Packaging subjects too. A fill up that arrives in suitable shielding packaging reduces the danger that it leaks, spills, or arrives deformed. With tacky supplies or fluids, that could be a truly difficulty.

Finally, reinforce concerns. If you can't title compatibility, it supports whilst the shop can interpret your photo and factor you closer to the suitable half. It is probably the most motives I like shopping from professionals in place of treating refills as random add-ons.

The most competitive “replacement” can be practise, now not a brand new part

This is the component workers do not regularly want to hear, but this is truthful. Sometimes the purpose a prop appears to fail is simply not the prop. It is the means it will get dealt with.

If you locate that a replenish wears out quicker than anticipated, ask even if your coping with is stressing the aspect extra than it ought to. If a trick turns into unreliable simply if you [buy magic tricks](#) happen to be tired, your methodology underneath fatigue perhaps introducing blunders that the replenish is not going to restoration.

That isn't always a controversy for skipping refills. It is an issue for pairing refills with small technique audits. Most props closing longer if you deal with them kindly and save them correct, instead of forcing them to endure hard resets.

A purposeful situation: protecting a group consistent over a month

Imagine you participate in the similar center set for a month. You do small close-up spots, then a number of longer reveals. By week two, you note a texture distinction in how one thing releases. You may perhaps blame your palms, or it's possible you'll forget about it.

Instead, you swap the severe stock up after a rehearsal session in week two. The prop feels customary returned. The activities remains the similar. Your target audience not at all notices anything else as opposed to smoother pacing.

That is the whole factor of refills and replacements. The paintings does no longer appear as if repairs. It feels like confidence.

And self belief is contagious. When you suppose strong, you decide to your timing, you retain your consciousness outward, and your overall performance reads like it is effortless, even if your package is doing the quiet work behind the scenes.

Keeping your magic shop purchases from becoming clutter

One final truth payment. Refills and replacements can come to be hoarding in case you purchase everything that sounds like minded. It is tempting, distinctly should you see a sale or you're planning for future gigs.

A stronger approach is to inventory what you desire for a better efficiency window and basically then plan the following restock.

If you need a functional rule, avoid a small, actually organised "active" stash. It will have to be enough for one gig's value of contingencies, plus a touch breathing room. Then keep the relaxation as a destiny plan, not as an emergency heap.

When your kit remains tidy, you prefer the correct prop turbo, and turbo choosing is a part of reliability. People underestimate how a whole lot time gets misplaced fishing for the fitting stock up at showtime.

Two shrewdpermanent tactics to build a top off plan that truthfully works

If you choose the such a lot impressive start line, you do not desire a confusing process. You need two habits: monitoring what fails first, and buying replacements that event your surely workouts, not just your wishlist.

Start by means of observing, after both gig, what felt "off" and what felt ideally suited. After a few weeks, a trend emerges. Then you restock the properly one or two models that guard your efficiency the maximum.

And if you happen to aren't convinced what to restock first, lean in the direction of the ingredients that define the impact's behaviour: the consumable that modifications unlock, the replenish that restores friction or tension, the adhesive unit that holds or releases predictably, and the alternative side that helps to keep mechanisms aligned.

That is in which refills convey their choicest worth, in proper-global performance terms.

If you are development or refreshing your package from a magic store uk, treat your refills like calibration. Keep them constant, hold them staged, and your tips will think like they belong to you back, now not like you're borrowing any individual else's managing.

When a routine depends on a tiny prop doing a true task, the surest improve is generally the single you change in the past it ever becomes a concern.